

FasTrak & TrimStar Mulch Kit 48" Deck
Part Number 108223
FasTrak & TrimStar Mulch Kit 54" Deck
Part Number 108197
FasTrak Mulch Kit 60" Deck
Part Number 109544

Instruction No. 108198
August 2009

Parts List - P/N 108223

Listed below are parts included in this kit. If any parts are missing or damaged, please contact the Hustler Parts Department.

P/N	Description	Qty.
108227	Mulch baffle w/a	1
108225	Mulch baffle, common w/a	2
086660	NT .375-16 HX G5 ZN NY	4
767954	FW .406 x .812 x .060 SAE HRD ZN	4
011320	CB .375-16 x .75 STD ZN	1

Parts List - P/N 108197

Listed below are parts included in this kit. If any parts are missing or damaged, please contact the Hustler Parts Department.

P/N	Description	Qty.
108202	Mulch baffle w/a	1
108200	Mulch baffle, common w/a	2
086660	NT .375-16 HX G5 ZN NY	4
767954	FW .406 x .812 x .060 SAE HRD ZN	4
011320	CB .375-16 x .75 STD ZN	1

Parts List - P/N 109544

Listed below are parts included in this kit. If any parts are missing or damaged, please contact the Hustler Parts Department.

P/N	Description	Qty.
109314	Mulch baffle w/a	1
109312	Mulch baffle, common w/a	2
086660	NT .375-16 HX G5 ZN NY	4
767954	FW .406 x .812 x .060 SAE HRD ZN	4
011320	CB .375-16 x .75 STD ZN	1

Installation - FasTrak

1. Park the tractor on a flat surface and set park brakes. Shut-off engine and remove negative battery cable from the battery by unlatching the seat pan and rotating the seat up for battery access. Raise the front of the tractor and deck up until the mulchers can be installed. Block the unit up.
2. The discharge chute does not need to be removed to use the mulch kit.



WARNING: Do not operate the unit unless the mulch kit or discharge chute is installed.

3. Locate the pilot holes that are drilled in the deck per Fig. 1. Drill these three holes out to 13/32" diameter.
4. Mount the mulchers to the deck using the hardware shown per Fig. 2.
5. Attach the new mulch blades with the existing hardware. Torque to 118 ft.-lbs.

NOTE: Mulching blades are not included in this kit. Use the following part numbers when ordering blades:

796623 Mulch blade, 48" (qty. 3)
797704 Mulch blade, 54" (qty. 3)
794214 Mulch blade, 60" (qty. 3)

6. Remove the block from under the deck and lower the unit.
7. Re-connect the negative battery cable, rotate the seat to the down position and lock in place. The unit is now ready to operate.

Installation - TrimStar 48"/54" Recoil Start

1. Park the tractor on a flat surface and set park brake. Shut-off engine. Raise the front of the deck up until the mulchers can be installed. Block the unit up.
2. The discharge chute does not need to be removed to use the mulch kit.



WARNING: Do not operate the unit unless the mulch kit or discharge chute is installed.

3. Locate the pilot holes that are drilled in the deck per Fig. 1. Drill these three holes out to 13/32" diameter.
4. Mount the mulchers to the deck using the hardware shown per Fig. 2.
5. Attach the new mulch blades with the existing hardware. Torque to 118 ft.-lbs.

NOTE: Mulching blades are not included in this kit. Use the following part numbers when ordering blades:

796623 Mulch blade, 48" (qty. 3)

797704 Mulch blade, 54" (qty. 3)

6. Remove the block from under the deck and lower the unit.

Installation - TrimStar 54" Electric Start

1. Park the tractor on a flat surface and set park brake. Shut-off engine and remove negative battery cable from the battery. Raise the front of the deck up until the mulchers can be installed. Block the unit up.
2. The discharge chute does not need to be removed to use the mulch kit.



WARNING: Do not operate the unit unless the mulch kit or discharge chute is installed.

3. Locate the pilot holes that are drilled in the deck per Fig. 1. Drill these three holes out to 13/32" diameter.
4. Mount the mulchers to the deck using the hardware shown per Fig. 2.
5. Attach the new mulch blades with the existing hardware. Torque to 118 ft.-lbs.

NOTE: Mulching blades are not included in this kit. Use the following part numbers when ordering blades:

797704 Mulch blade, 54" (qty. 3)

6. Remove the block from under the deck and lower the unit.
7. Re-connect the negative battery cable. The unit is now ready to operate.

Converting back to Side Discharge Mode (all decks)

1. Park the tractor on a flat surface and set park brake. Shut-off engine. Remove negative battery cable from the battery, if applicable.
2. Raise the front of the deck up until the mulch kit can be removed. Block the unit up and remove all mulch kit baffles and hardware as shown in Figure 2.
3. **IMPORTANT:** One of the holes left open in the top of the deck will require that it be plugged using a 3/8"-16 x 1.0" cap screw, 3/8" flat washer and 3/8"-16 nut. Figure 1
4. If the discharge chute was removed when installing the mulch kit, re-attach it.



WARNING: Do not operate the unit unless the mulch kit or discharge chute is installed.

5. Remove the block from under the deck and lower the unit.
6. Re-connect the negative battery cable if applicable.
7. The unit is now ready to operate.

Fig. 1

48"/54"/60" Decks

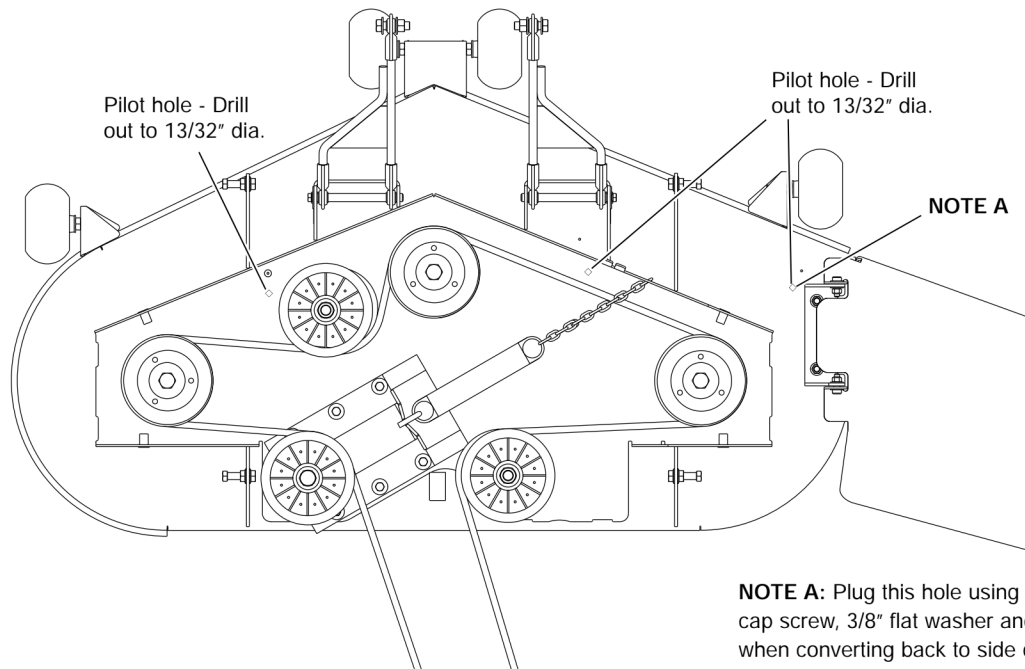
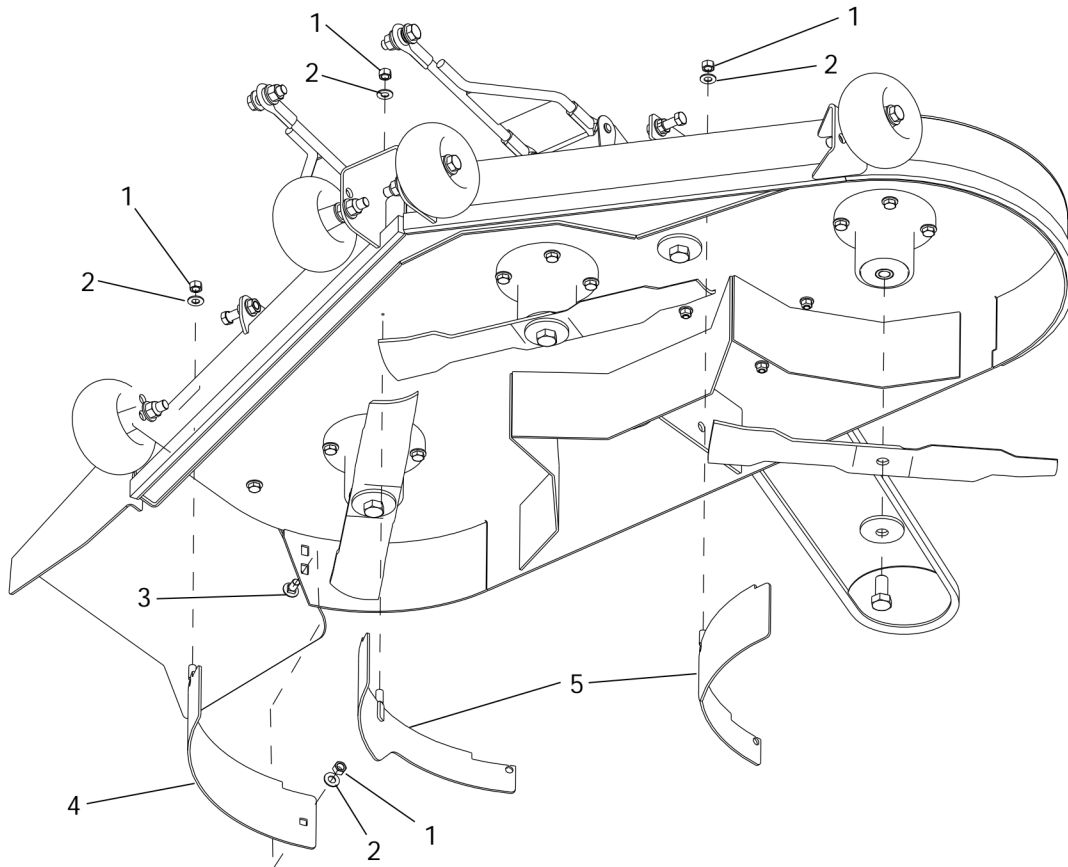


Fig. 2



Index #	Part No.	Qty	Description
1	086660	4	NT .375-16 HX GR5 ZN NY
2	767954	4	FW .406 x .812 x .060 SAE HD ZN
3	011320	1	CB .375-16 x .75 STD ZN
4	108202	1	Mulch baffle w/a (54" deck)
	108227	1	Mulch baffle w/a (48" deck)
	109314	1	Mulch baffle w/a (60" deck)
5	108200	2	Mulch baffle, common w/a (54" deck)
	108225	2	Mulch baffle, common w/a (48" deck)
	109312	2	Mulch baffle, common w/a (60" deck)